

TH-RLK Series

2021 New model LED Street light ,Genuine energy efficient reliable alternative to existng HID street light solutons. The modular led street light ofer an enhanced light output through a significantly more regular uniformity and more realistic and comfortable light colors. Energy savings of up to 50 80% over existing HID solutions. Combined with a 10+ year opera-tional life at 24 hours daily usage and a zero planned maintenance over this period, this translates into major savings to municipalities.



Fixture

- Philips LEDs
- Meanwell Driver
- 6063-T5# Aluminous Materials
- Resist fire-retardant PC LED lens
- Stainless steel screw in all sets
- IP68 grade

Specification

Watts	50w	100w	150w
Delivery Lumens	7500lm ±5%	15000lm ±5%	22500lm ±5%
Efficacy(lm/w)	135~150lm/w	135~150lm/w	135~150lm/w
Input Voltages	AC100-240V	AC100-240V	AC100-240V
Frequency Range	50/60Hz	50/60Hz	50/60Hz
CRI	75~90	75~90	75~90
Equivalent Wattage	100W MH/HPS	100W MH/HPS	100W MH/HPS
Housing:	Aluminum+PC	Aluminum+PC	Aluminum+PC
Power Factory	0.97	0.97	0.97
LEDs Qty's	LuminLEDs 3030 80pcs	LuminLEDs 3030 160pcs	LuminLEDs 3030 240pcs
Beam Angle:	T3/T4	T3/T4	T3/T4
Mode:	Warm white / daylight white / light+ / light -		
Certificate	CE ROHS		

TH-RLK Series

Products Details



150W



100w

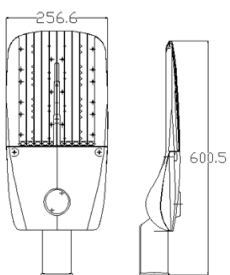


50w

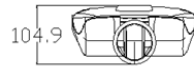
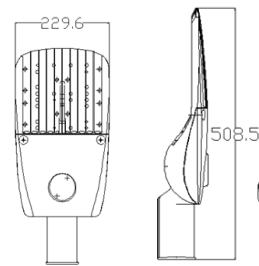


Back of the light

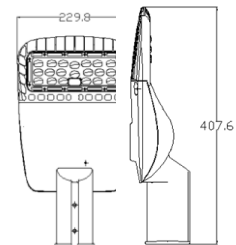
Dimension



150W

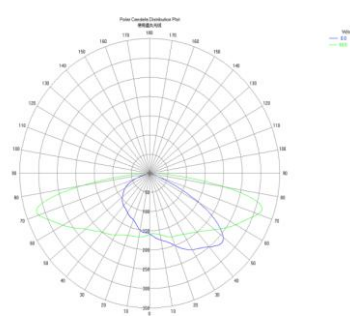
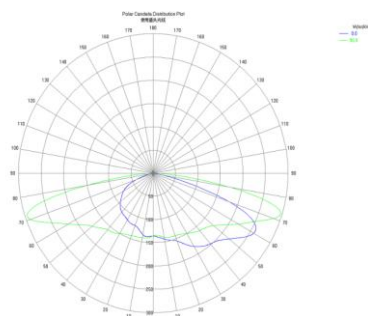


100W



50W

Light distribution curve



Packing Details

	piece per carton	carton size	Gross Weight
50W	1piece per carton	432*272*165mm	3.4kg
100W	1piece per carton	537*272*165mm	4.1kg
150W	1piece per carton	632*299*165mm	4.6kg

Caution

- a) Assure lamp body installed tight, and then turn on the light.
 - b) The power will increase a little with the temperature rising at the initial stage of lighting. This is normal phenomenon. When keep the lamp lighting for 1 hour, the power will automatically adjust to normal range.
 - c) Do not touch the lamp or relevant accessories when it is working.
 - d) Inner product has high pressure, please do not dismantle by self. Avoid to harm.
 - e) Turn off power in case of any maintenance
 - f) 3 years warranty starts from taking delivery of goods a day. The warranty content includes the damage of all components, such as LED light source and power supply...etc.
 - g) The calculation of warranty period with turn on the light for a day 8-10 hours is limited. As everyday longer than 10 Hours, then gradually decrease according to comparison warranty time limit.
 - h) This company must be authorized to have maintenance cost under the following situations.
 - a. The light hasn't operated according to the stipulation under the common normal environment and thus causes the breakdown destruction.
- Artificial destruction (fallen wound, to strike, to hit hard and so on), the artificial mistake (losing, wars, not to take care of properly and so on) or other unusual factor result. c. Customers or other guys add attach, the expansion, the revision, to repair by themselves



THECOSKY

WECHAT

Shenzhen Tianhong Optoelectronics Co.,Ltd

Address: A Hanhaida Industrial Park, No. 7004 Songbai Road,

Songgang Town, Shenzhen, Guangdong, China P.C.: 518105

Mobile: 0086-135-0159-2859 Email: info@hitechleds.com

Skype: Annie-dai52077

Link: www.thleds.com